

2010 GRANGE EXPOSITION

PREMIUM BOOK



“To preserve and bring together for exhibition, at proper seasons, the choicest products of orchard, farm, garden, dairy and household skill, that we may incite one another to good works.”

**CALIFORNIA STATE GRANGE ANNUAL CONVENTION
OCTOBER 13-17, 2010
MOUNT HAMILTON GRANGE, SAN JOSE, CALIFORNIA**

<p>Entries Close: September 15, 2010 Exhibits Receiving: Oct. 13, 2010, 1:00 – 6:00 PM Entry Release: Oct. 17, 2010, 8 AM to Noon</p>

California State Grange 2010 Exposition

Katie Squire, Coordinator
Assistant HEAVSt^c
Jas: a } d , CA 9 i i F i

On behalf of Worthy Master Bob McFarland and the Officers and Directors of the California State Grange I wish to welcome you to the 10th Grange Exposition book.

As in previous years we have embedding [hyperlinks](#) within the electronic version of the Expo book. With a hyperlink you will be taken from one location in the text to another by simply highlighting the blue underlined text and Control – left click. The index is completely linked and you will also find links throughout the book. Some links may take you to additional documents posted to the internet. We hope that this will be beneficial to you as an exhibitor. We are also providing additional information about additional Youth and Junior Grange programs that can provide opportunities for the members of your Grange.

Within this book you will find the many contests and competitions sponsored by the departments of the Grange. All told there is a total of more than \$12,000 in premium prize awards available this year in the Grange Exposition. We are still looking for additional sponsors and donors for these awards. Individual class, Age Sections and full division sponsorships are available. Sponsors can be individuals, Granges and businesses. Please contact the Department Directors or Katie Squire, Exposition Coordinator, if you would like more information on sponsorship opportunities.

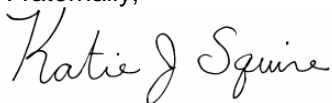
Through the year, as we get closer to California State Grange Convention in October, there may be additional information, new sponsors for awards, or other updates to the Grange Exposition Premium Book. Please visit the California State Grange website www.californiagranger.org for timely updates. Email notices will be sent out when major updates are installed. If you would like to be notified of changes and updates by email please email a quick note to ExpoBook@californiagranger.org. Updates will also be posted to the California Grange News, but due to printing schedules these announcements will not be as current as those on the website.

We would like to extend our sincere gratitude to all of the Exhibitors, thank you all for your support.

You are encouraged to use the Grange Exposition as a tool to introduce the Grange to prospective members. Invite individuals in your community to show as a Guest Exhibitor. Let your local 4-H members, FFA students, and Scouts and other youth groups, as well as their parents, know that you would like to sponsor their participation. Another great idea is to offer classes at your Grange. Many Granges hold canning workshops for their members and community at their hall and encourage participants of all ages to submit entries, with prize-winning results. You can hold a community fair at your Grange and use the Grange Exposition as the list of classes. Enlist the aid of your schools to hold a Student Art Festival featuring Arts, Crafts and Creative Writing, having the top entries submitted to the Grange Exposition for judging. Hold an awards ceremony afterward and invite the participants to join your Grange. All of these ideas are ways that you can make your Grange more visible within your community, increase the level of activity and add more fun to your Grange.

Again, thank you for being a part of the 2010 Grange Exposition. We look forward to seeing your exhibits this year and continuing to build this program into the future.

Fraternally,



2010 GRANGE EXPOSITION PREMIUM BOOK

TABLE OF CONTENTS

Table of Contents	1
Grange Exposition Committee	2
Rules for 2010	3
Definitions	4
Bringing Entries to Expo	5
Art	6
Crafts	6-7
Creative Writing	7
Health & Safety Awareness	8
Finger Spelling	8
Sign-A-Song	8
Floriculture	8
Fur & Feathers	9
Grange Members in Action.....	9
Horizon Leadership Recognition Program	9
Scholarships	9
National Grange Achievement Awards	9
Grange Youth Fair Team	9
Public Relations	9
Collections	10
Scrapbooks	10
Home Arts	10-13
Baking	10
Confections	11
Food Preservation	11-12
Textiles	12-13
Horticulture	14
Livestock	14
Miscellaneous	14
Natural Science/Agriculture	14-15
Performing Arts	15
Photography	16
Technology	16-17
Ag Mechanics/Technology	16
Computer Applications	16-17
Woodworking	17
Judging Criteria and Scorecards	18-19
Membership Applications	20
Entry Instructions	21
Grange Regions	21
Mailing Addresses for Entries.....	21
Entry Form	22

GRANGE EXPOSITION COMMITTEE

Chief Executive Officer

Bob McFarland, Master California State Grange
3830 U Street, Sacramento, CA 95817

Board of Directors

Shirley Baker, Leo T. Bergeron, Ingermarie Bevans, Jon Luuvas, Larry Kroger, Martha Stefenoni

Expo Coordinator/Registrar -- Katie Squire

' , ' \$' I ' GfYYizGUVUa Yblc, CA 9) , %+

Exhibit Superintendents

Art, Creative Writing, Photography

CSG Lecturer – Buzz Chernoff

Crafts

GWA Director
Betty Eyler

Junior Grange Director
Michele Price

Woodworking Committee
Dave & Pat Wilson

Health and Safety Awareness

Youth Director

Junior Grange Director

Floriculture

GWA Director

Grange Members in Action

Grange Youth Activities Director

Membership Director

Home Arts

GWA Department
Betty Eyler

Miscellaneous

CSG Lecturer
Buzz Chernoff

Natural Science

Performing Arts

CSG Lecturer

Junior Grange Director

Youth Director

Technology

CSG Lecturer

Youth Director

Á
Á
Á

This book is also available as a downloadable file by visiting the California State Grange Web Site
www.californiagranger.org

Welcome to the 2010 California Grange Exposition

TOTAL PREMIUMS OFFERED \$10,000+

2010 RULES

The Grange Exposition brings together all of the Grange contests to make it easier for you, our members and friends, to participate in and support the Grange. This book is for Grange and Junior Grange members of all ages as well as prospective members within the community. Use the Exposition to introduce the Grange to other people. Consider offering workshops or classes at your Grange Hall or meeting place that could result in entries for these contests. Invite experts to introduce new techniques or skills of interest to your members and the community. Hold your own local Exposition to increase the visibility of your Grange in the community.

Separate Divisions are listed for Juniors (4 1/2-13 inclusive) and Youth (14-20) as well as Senior (21+) exhibitors. The age of an entrant, unless otherwise stated, is based on the participant's age on 1/1/2010. The exhibitor will select the appropriate Section for their participation. The same class numbers are used in each age section.

Premium checks will be processed and sent out after the State Convention.

The California State Grange and the Grange Exposition are not responsible for errors on entry forms. No exhibitor shall be entitled to an award that has been disallowed as a result of his/her own error. Entries not meeting contest rules, including labeling, will be disqualified and excluded from awards.

Entries must be the work of the exhibitor and completed within the contest year. With the exception of classes using recycled items, materials should be new. Work should be clean and in good repair.

Decisions of the judges as recorded on the judging sheets are final. To encourage high standards the judges shall place exhibits based on merit. Judges may withhold placings as they see fit. Best of Show awards will be awarded at the judge's discretion to superior exhibits.

It is important for exhibitors, GYF advisors, and members to be familiar with the rules under which these contests are held. If you have questions regarding the application of rules, qualification of entries or exhibitors please contact the appropriate Department Director. You may also contact the Registrar at (559) 935-0926 or by email at expo@californiagrango.org

- 1) Recipe or ingredient list is required for each entry in baking, confections, and food preservation classes.
- 2) Advance Registration is required.
- 3) A **maximum** of 2 entries per exhibitor will be allowed in any class.
- 4) Substitution of exhibits will only be allowed within the same class, and by the same exhibitor.
- 5) Exhibits must have been completed after September 1, 2009 to be eligible for entry in this show.
- 6) Entries made from a kit will only be accepted in classes where the use of kits is allowed.
- 7) Exhibits may be entered in only one class. If an entry fits into more than one class or contest it is up to the exhibitor to select the class in which the entry best fits.
- 8) Exhibits entered in the wrong class will be disqualified.
- 9) Non-Grange members may exhibit as a Guest Exhibitor. A member of a Grange in California must also sign the entry.
- 10) Guest Exhibitors may only exhibit for one year. Grange membership must be confirmed in order to continue competing.
- 11) Entries received from exhibitors who are members of or are sponsored by Granges that have been suspended will not be accepted.
- 12) All entries must be submitted using the Official Grange Exposition Entry Form located at the end of this book.

NEW FOR 2010

Awards in GWA sponsored contests have increased.
1st \$7.00 2nd \$5.00 3rd \$3.00

Junior Theme Crafts: Host State – N. Carolina:
The history of flight. Small World – Australia:
Special Creatures. Holiday Craft: Veteran's Day.

National Junior Grange Contests: My Family,
write about you and your family and draw a picture
of your family. Create a scrapbook page about you.
Create a craft using your hand print.



[Return to Table of Contents](#)

Definitions

- ☞ **Amateur:** A person who engages in an event or activity as a pastime rather than a profession.
- ☞ **Professional:** A person who engages in an event or activity as a livelihood rather than as a hobby.
- ☞ **Group:** More than one person working together on a project, exhibit or entry.
- ☞ **Section:** Age classifications.
- ☞ **Junior:** Classes for ages 4 1/2 to 13 inclusive (up to 14th birthday).
- ☞ **Youth:** Classes for ages 14 to 20 inclusive.
- ☞ **Senior:** Classes for ages 21+.
- ☞ **Adult** Classes for ages 14+
- ☞ **Open:** Classes in which all ages compete without separate Sections for each age group.
- ☞ **Entry Deadline:** The date when entry forms must be received.
- ☞ **Entry/Entries:** An object, or collection of objects intended for exhibit.
- ☞ **Entry Form:** The paper work required for entering a contest.
- ☞ **Entry Label:** The identification form required to be attached to any entry
- ☞ **Entry Receiving:** The date and time, and location for the receiving of items for judging. Varies with contest entered and department.
- ☞ **Exhibitor:** The person who produced the entry and owner of the exhibit.
- ☞ **Guest Exhibitor:** A participant who is not, nor has ever been a member of the Grange. Guest Exhibitors may only exhibit for one contest year and must join a Grange to participate subsequently

Judging Systems

American: A method of judging in which entries are ranked against each other and the best entries are selected for placing. Normally, only a single 1st, 2nd, and 3rd place award in the class will be awarded.

Danish: A method of judging in which entries are compared to a scorecard or standard. As many first placing, etc. as merited will be given.

Please note: Exhibit Receiving dates and times are prior to the beginning of the California State Grange Session. Late exhibits will not be judged.

Entry Forms must be postmarked (unless otherwise noted) By: September 15, 2010

2010 Grange Exposition

Registrar

' , ' \$' l ' GhfYYh

GUVUa Ybhcz75 ' ' -) , %+



SPECIAL AWARDS

Sponsored by the California State Grange

Sweepstakes - Individual Awards

A special award of **\$100** will be presented for the individual Junior, Youth and Senior exhibitors receiving the highest overall point score for entries in all departments. Points will be based on the following guidelines: First award - 5 points, Second Award -3 points, Third Award - 1 point.

Sweepstakes - Grange Award

A special award of **\$100** will be awarded to the Junior and Subordinate Grange receiving the highest point score for entries in all departments. Points will be based on the following guidelines: First award - 5 points, Second Award -3 points, Third Award - 1 point for exhibits properly submitted by Grange members or Guest Exhibitors sponsored by the Grange.

Luella Crandall Memorial Award

Best Use of Butterflies in any Exhibit

Sponsored by San Diego County Pomona Grange
#35

This award is offered in memory of Regional GWA Director, Luella Crandall in recognition for her many years of service to the Grange. Butterflies held a special place in Luella's heart.

The top Junior, Youth and Senior exhibits displaying the best use of butterflies within the design will each receive a special ribbon award and \$15.

Consideration for this award will be given to all pre-registered, still exhibit entries within the 2010 California Grange Exposition, regardless of division. To be eligible for this award, exhibitors **must include the word "Butterfly"** at the end of the exhibit description on the official California Grange Expo entry form.

[Return to Table of Contents](#)

BRINGING ENTRIES TO THE EXPOSITION

Ideas for Junior Grange Leaders, Youth Advisors and Delegates

HINTS AND SUGGESTIONS

The following are some suggestions that have been gleaned from other leaders who exhibit at fairs and expositions throughout the state. These ideas may make it easier for leaders to deliver and check in the group exhibits at the 2010 Grange Exposition.

EARLY IN THE YEAR

- Be sure each member or family has a copy of the 2010 Grange Exposition book. Some contests have special rules requiring identification on the entry form as well as information or materials that must be submitted with the exhibit.
- Plan special events to work on projects. Food Dehydration, Crafts, and Canning are all projects that can be worked on as a group.
- **Repeat, Remind and Reiterate** the Entry Form must be postmarked by **SEPTEMBER 15, 2010**. Exhibitors or families should submit their entry forms in a timely manner. Entry forms must be complete and signed. Leader or parent signatures are required for Junior & Youth Exhibitors. Entry forms also ask for the Grange name & number, make sure this is correct on the entry forms.
- Some contests in the Grange Exposition Book are held prior to the State Grange Convention at special statewide Grange events during the year. Points for awards in these contests are also counted toward the Sweepstakes Awards, please include them on entry forms.

BEFORE CONVENTION

- Require exhibitors sending entries with someone else to provide a copy of their entry form to you for your records. Exhibitors should also keep a copy for themselves. Cross check the entry form and the exhibits before leaving for convention. You can account for No Show items at this time.
- Have all exhibits labeled for easy identification as to exhibitor name, section and class number. Labels should be temporary, but firmly affixed so they don't move in transit. Post-it labels work well on flat items but do not work well on 3-D projects.
- Baking and Candy exhibits must be placed on a foam plate or tray and enclosed in a zipper style resealable plastic bag. A recipe or ingredient list

is required.

- Label food preservation exhibits with: date of processing, complete list of ingredients, method of processing, and type of fill used (hot pack, cold pack). Some leaders have found that small labels on the lid work well.
- Box or group all of each exhibitor's items together.
- Pack exhibits to minimize damage. Enclose Styrofoam packing "peanuts" in plastic bags to minimize mess. Plan to re-use packaging and boxes to bring the exhibits back home after convention.

AT CONVENTION

- Bring a copy of the entry form for each exhibitor when you check in. This gives you an easy double check to make sure you have all the exhibits.
- Be on time. Check-in for exhibits begins prior to the official opening of the California State Grange Convention. **Late exhibits cannot be judged.**
- An area will be set aside for exhibitor preparation outside of the judging area. We hope to have additional volunteers to assist you at convention with the labeling of your exhibits.
- Official Entry Labels will be bundled together for each exhibitor. A Claim Check for each item is attached at the bottom of the label. This is removed and the bottom portion is folded to cover the Exhibitor name during judging. Rubber bands, paper clips and safety pins will be available to attach the Entry tag to the exhibit.

PICKING UP ENTRIES

- **Please do not ask to pick up entries early.** Due to the shortened meeting schedule all of the volunteers will be working after hours to have your entries ready for release on Sunday morning.
- Be prompt. The Exposition committee cannot come looking for you to pick up your work.
- Bring the boxes with you.
- Have the claim checks, you will be given one for each item that was received for exhibition. Bring the entry form too, and then cross off each item as it is checked back to you.
- If possible, again box each exhibitor's exhibits together. This will make it easier for you to give them back when you return home.
- If you have multiple winners, keep track of how many ribbons for each placing are needed.
- Stay calm, the volunteers have worked long hard hours and are tired too.



[Return to Table of Contents](#)

ART DEPARTMENT

2-D ART

Sponsored by the California State Grange

Lecturer's Department

Premium Awards:

1st \$7.00 2nd \$5.00 3rd \$3.00

Division 10 FINE ARTS

Entries must be completed after September 1, 2009 and be the original work of the exhibitor. **Maximum size 24"x36" including frame**, no minimum size. Entries will be judged according to the medium used. Charcoal, Pencil, and Pastel entries must have been treated for permanency to stop smudging. Entries must be framed or have a firm backing. **Appropriate hanging devices or wires are required.** Glass covering is not allowed on any entry, Plexiglas and other non-breakable coverings are acceptable. Computer enhancement of artwork, or art generated by using computer printers is not permitted in these classes. No nudes

Section A1	Junior, 9 & Under
Section A2	Junior, 10 to 13 inclusive
Section B	Youth
Section C	Senior

Class 1	Oils & Acrylics
Class 2	Water Colors
Class 3	Charcoal or Pencil Drawing
Class 4	Calligraphic Pieces
Class 5	Crayon, Markers or any other media
Class 6	Printmaking, any kind



NATIONAL GRANGE CREATIVE ART CONTEST

Sponsored by the California State Grange Junior

Department

Premium Awards:

1st \$7.00 2nd \$5.00 3rd \$3.00

Division 12 NG CREATIVE ART CONTEST

Draw a picture of your family. Use any medium. Must be 8 ½ X 11" in size. State awards will be given. All entries in this contest will be submitted for judging at the National Grange Convention in November. Ages as of January 1. On the back of the artwork place a label with contestant's name, birth date, address, Grange name and number.

Section A1	Junior (6 and Under)
Section A2	Junior (7-8)
Section A3	Junior (9-11)
Section A4	Junior (age 12-14)

Class 1	My Family
---------	-----------

GRAPHIC ARTS – 3D ART

Sponsored by the California State Grange

Lecturer's Department

Premium Awards:

1st \$7.00 2nd \$5.00 3rd \$3.00

Division 15 BANNERS & POSTERS

Banners must be made out of cloth. Materials mounted on the banner must be securely attached. Please include a hanging rod. Posters in this contest must be no larger than 36" wide by 36" long. Entries shall be hand drawn, painted, or constructed on poster board. **Computer generated posters must be entered in the Technology Divisions.**

Section A1	Junior, 9 & Under
Section A2	Junior, 10 to 13 inclusive
Section B	Youth
Section C	Senior

Class 1	Banner promoting Grange
Class 2	Grange Banner, made by group
Class 3	Poster promoting Grange
Class 4	Poster, any other

Division 20 ARTISAN CRAFTS

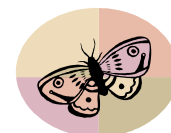
Premium Award Sponsor

Grange Insurance Agency – Loma Rica -Yvette Adams, Agent
Class 2, 3 & 4

Exhibits in bisque ware, hydrocal, and pottery must have name or initials, month and year permanently written or carved in the underside. Exhibits in china painting must have name or initials, month and year painted on object prior to firing.

Section A1	Junior, 9 & Under
Section A2	Junior, 10 to 13 inclusive
Section B	Youth
Section C	Senior

Class 1	Basketry
Class 2	Bisque ware, container decorated
Class 3	Bisque ware, figure or animal
Class 4	Bisque ware, any other kind
Class 5	China painting
Class 6	Hydrocal, (plaster) any item
Class 7	Pottery container, thrown or sculpted
Class 8	Pottery figure or animal
Class 9	Pottery, any other kind
Class 10	Tole Painting, any kind



CRAFTS DEPARTMENT

Sponsored by the California State Grange

Women's Activities Committee

Premium Awards:

1st \$7.00 2nd \$5.00 3rd \$3.00

Division 30 CHRISTMAS TREE ORNAMENT

Maximum size 6 inches, not including attached hanging ribbon or device. Ornaments that qualify for entry in classes 1-9 may not be entered in Class 10 Any Other Kind.

Section A	Junior
Section B	Youth
Section C	Senior

Class 1	Beaded
Class 2	Counted Cross Stitch
Class 3	Crochet, knit or tatted
Class 4	Decorated ball
Class 5	Fabric
Class 6	Metal
Class 7	Natural materials
Class 8	Plastic Canvas
Class 9	Wood
Class 10	Any Other Kind
Class 11	Large Ornament – over 6 inches



Exhibitor Note: Christmas tree ornaments should have some type of hanging device (ribbon, wire, string loop) attached. The ornaments may be displayed on a tree during the Exposition.

[Return to Table of Contents](#)

Division 33

GENERAL CRAFTS

- Section A** Junior
- Section B** Youth
- Section C** Senior



- Class 1 Recycled craft item, metal
- Class 2 Recycled craft item, paper
- Class 3 Recycled craft item, plastic
- Class 4 Recycled craft item, wood
- Class 5 Fabric Craft, decorated
- Class 6 Basket, lined
- Class 7 Jewelry (not metal or lapidary)
- Class 8 Painted Rock or Natural Object
- Class 9 Trash to Treasure
- Class 10 Decoupage
- Class 11 Any other Craft Item

JUNIOR THEME CRAFTS

Sponsored by the California State Grange Junior Grange Department

Premium Awards:

- 1st \$5.00
- 2nd \$3.00
- 3rd \$2.00

Junior Theme Craft Best of Show - \$15.00

To be selected from Sections A1, A2, A3
Sponsored by Ione Grange #681

Division 36

JUNIOR THEME CRAFTS

- Section A1** Junior, 6 & Under
- Section A2** Junior, 7-8
- Section A3** Junior 9-11
- Section A4** Junior 12-14
- Section B** Youth
- Section C** Senior

- Class 1 Host State – History of Flight
- Class 2 Small World – Strange Creatures
- Class 3 Holiday Craft: Veteran's Day
- Class 4 Give Me a Hand*

Exhibitor Note: **NO KITS ALLOWED**

HOST STATE – North Carolina: History of Flight Take a flight of fancy and honor the home of the Wright Brothers. No kits are allowed. Use your imagination to create a replica of a real plane or design your own. Max. Size 12"x12"x12".

SMALL WORLD – Australia: Strange Creatures Australia is the home to a wide variety of interesting animals. Now it is your turn to create your own "Strange Creature". Max. 12"x12"x12".

HOLIDAY CRAFT: Veteran's Day: Recognize and salute the individuals that have given their time in service to our nation. Max. Size 12"x12"x12".

GIVE ME A HAND – National Grange Contest Create a craft project using your handprints. All Junior (Section A1, A2, A3, A4) entries in this contest will be submitted for judging at the National Grange Convention in November. Ages as of January 1. On the back of the artwork place a label with contestant's name, birth date, address, Grange name and number.

CREATIVE WRITING DEPARTMENT

Sponsored by the California State Grange Lecturer's Department

Premium Awards

- 1st \$7.00
- 2nd \$5.00
- 3rd \$3.00

Entries in classes 1, 2, & 3 are limited to 500 words, excluding title. Entry information will be placed on the back of the writing. Writings must be typed, double spaced on 8 1/2" x 11" plain white paper. Do not send in plastic sheet protectors. Entries must be the original work of the entrant. Entries must fit the theme of the class. Entries can be written in any style - story, poem, rap, etc. **Please note special Junior Age Sections. Age is determined by exhibitor's age on 1/1/2010.** All entries are due at the California State Grange Convention.

Division 40

CREATIVE WRITING

- Section A1** Junior 6 & Under
- Section A2** Junior 7-8
- Section A3** Junior 9-11 years of age
- Section A4** Junior 12 -14
- Section B** Youth
- Section C** Senior



- Class 1 The Grange Has Taught Me...
- Class 2 I Was Inspired When...
- Class 3 My Family*
- Class 4 You Must Read This Book
- Class 5 Poetry

*Junior entries in Class 3 will also be submitted for judging at the National Grange Convention. Juniors 8 years of age and under (Sections A1, A2) may dictate their entries for this competition. **Please note this on the entry form. Write about you and your family. Limited to one page, typed or hand written on 8 1/2 x 11 paper.** On the back of the writing place a label with contestant's name, birth date, address, Grange name and number.

Best Use of Butterflies: The top Junior, Youth and Senior exhibits displaying the best use of butterflies with the project will receive a special ribbon and a cash award of \$15. Be sure to include the word "Butterfly" at the end of the exhibit description on the official entry form. Award winners may be selected from any class.

[Return to Table of Contents](#)



HEALTH & SAFETY AWARENESS

SPECIAL EVENTS MANUALLY SPELL THE ALPHABET CONTEST

Sponsored by the California State Grange Junior
Grange Department

Entry Deadline: Corresponds to the Registration Deadline
for the Youth & Young Adults Conference.

Manually spell, using the manual alphabet, all the letters of the
alphabet. Class based on age of contestant on the date of the
competition. First Place winners in Junior 8-14 age group may
compete at the Western Regional Conference.

Division 50	FINGERSPELLING CONTEST
Section D	Open
Class 1	Junior 7 & Under
Class 2	Junior 8 - 14
Class 3	Youth
Class 4	Senior



SIGN-A-SONG

Sponsored by the California State Grange Youth
and Junior Departments

Entry Deadline: Corresponds to the Registration Deadline
for the Youth & Young Adults Conference.

Participants must be Grange members. Signers must use total
communication skills (Sign Language (ASL preferred), facial
expression, mouthing words for lip reading, finger spelling if
appropriate, and body movement) to interpret a single song of
their choice. Props, and costumes are not allowed in this contest,
rhythm is optional. Anyone who is a professional instructor, or
who receives money for signing may not enter. A Hobbyist is
anyone who signs on an occasional basis and strictly for fun, also
someone who has entered the sign-a-song contest for more than
two years. Judging is held at the annual Youth Conference.
Exhibitors will submit 3 copies of the words being signed for the
use of the judges. Exhibitors must provide their own music. A
cassette and CD Player will be available. Participants must sign
their own name and song title. The audience and judges must be
informed as to which sign language is used. Only one song may
be signed during the competition performance. Top winners in
each class are invited to compete at the Western Regional
Conference.

Division 60	SIGN-A-SONG CONTEST
Section A	Junior
Class 1	Individual (8-14)
Section D	Open
Class 1	Novice
Class 2	Hobbyist
Class 3	Group

FLORICULTURE DEPARTMENT

Sponsored by the California State Grange
Women's Activities Committee

Premium Awards:

1st \$7.00 2nd \$5.00 3rd \$3.00

Division 80 **ARRANGEMENTS AND CENTERPIECES**

Exhibits made using dry or treated natural materials, artificial or
silk flowers. Not to exceed 24" in any direction or as noted.

Section A	Junior
Section B	Youth
Section C	Senior

Class 1	Dining Table (Max. size 6" x 12")
Class 2	Baskets
Class 3	Holiday
Class 4	Any other kind



Division 83 **HANGING ARRANGEMENTS**

Hanging arrangements made using dry or treated natural
materials or silk flowers, fabrics, trims etc. Not to exceed 24" in
any direction.

Section A	Junior
Section B	Youth
Section C	Senior

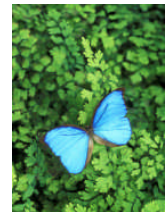
Class 1	Wreath Purchased foundation
Class 2	Wreath, Handmade foundation
Class 3	Wreath, Holiday
Class 4	Decorative Hat
Class 5	Any other decorative wall piece

Division 86 **POTTED PLANTS**

Exhibitor is responsible for any additional care of the plant during
the Exposition. Plants should be well watered, but not dripping
when presented for competition. Please include a foam plate or
plastic drip saucer for your entry. Actual plants must be submitted
for judging.

Section A	Junior
Section B	Youth
Section C	Senior

Class 1	Bonsai
Class 2	Cactus & Succulents
Class 3	Floral
Class 4	Foliage Plants
Class 5	Herb
Class 6	Any Other Kind
Class 7	Dish Garden or small planter garden



Best Use of Butterflies: The top Junior, Youth and Senior
exhibits displaying the best use of butterflies with the project will
receive a special ribbon and a cash award of \$15. Be sure to
include the word "Butterfly" at the end of the exhibit description on
the official entry form. Award winners may be selected from any
class.

[Return to Table of Contents](#)

FUR AND FEATHERS

Due to time constraints there are no competitions for live animals at the California State Grange Exposition. Members raising live animal projects are encouraged to submit [Grange Youth Fair Project Record books](#) in Div. 100 and 105.

Participants should consider entering the results of related projects in the Grange Exposition. For example: submit an album documenting the construction of a rabbit hutch in Ag Mechanics. Likewise, a Poultry project exhibitor could consider submitting baked goods for an exhibit using a product from their hens.

GRANGE MEMBERS IN ACTION

GRANGE YOUTH FAIR TEAM AWARDS

Sponsored by the Grange Youth Fair Department
Awards:
\$50 Savings Bond for Best All Around Exhibitors
(Div. 105)

Division 100 GRANGE YOUTH FAIR AWARDS

Submit a record book documenting your participation in the program. Neatness and completeness of the record book is crucial to achieving this award. Include full records for breeding projects. Entrants in Horticulture (including Agriculture, Horticulture and Floriculture) will include information from germination to harvest; these entries can be exhibited as either living exhibits or as a finished product. All activity within the scope of the project will be considered. **Please use the report forms located in the [GYF Program Handbook](#) for each Record Book to indicate entry in the appropriate class. In the Record book use the Exhibitor Awards form as a cover sheet.** All books will be judged using the Danish system. Blue award winners will be considered for the Premium Awards in each class.

Premium Awards

1st \$10.00 2nd \$7.00 3rd \$5.00

Section A Junior (5 to 13 years of age)
Section B Senior (Youth ages 14 - 19)

Class 1	Large Livestock
Class 2	Small Livestock
Class 3	Equestrian Project
Class 4	Breeding Project
Class 5	Dairy
Class 6	Horticulture
Class 7	Home Arts & General Exhibits
Class 8	Small Animals



Division 105 GYF BEST ALL AROUND EXHIBITOR

The Project Record Book must include the fair/exhibit results for entries in two or more major categories (i.e.: Large & Small Livestock; Home Arts; Horticulture & Floriculture; Fine Arts & Photography; Industrial Arts & Technology). **For 2010:** participants may also include the results of participation in the 2009 Grange Exposition for additional points

Section A Junior (5 to 13 years of age)
Section B Senior (Youth ages 14 - 19)

Class 1 Best All Around

HORIZON LEADERSHIP RECOGNITION PROGRAM

The [Horizon Leadership Recognition Program](#) provides an opportunity for Youth to represent our State at a National Convention the year following their selection as the state award recipient. They will have the chance to build their individual leadership potential, broaden their view of the Grange, receive training to use in their own states and build friendships across the nation.

Open to Grange members who have observed their 16th but not their 22nd birthday by November 1st. Applicants must be single, never been married. Previous Ambassadors are not eligible. Applicants must have attended a National Grange Regional Youth conference (Western States) in the past two years. Other prerequisites. Contact CSG Youth Director for details and applications, due September 1st.

NATIONAL GRANGE YOUTH ACHIEVEMENT AWARDS

Grange Members of all ages are encouraged to apply for [Achievement Awards](#) from the National Grange. Named after the Founders of the Grange each award places emphasis on activities that contribute to youth leadership skills. Recognition is given for activities at the local, state and national levels as well as increasing responsibility. See the Youth Resources page for additional information.

SCHOLARSHIPS

The California State Grange Foundation offers a number of [scholarships](#) for members. These are available to graduating high school students as well as for continuing college students. Applications become available after the first of the year.
Application Deadline: April 1 or as announced.

COMMUNITY SERVICE

Junior Grange Community Service Award

Junior Granges are encouraged to do community service. A Community Service Certificate Award is available from the National Junior Grange Director.

PUBLIC RELATIONS

Premium Awards

1st \$7.00 2nd \$5.00 3rd \$3.00

Division 110 GRANGE COMMERCIAL

Entries in this section may be created by an individual or group of any age. Submit a written copy of the script and an audio or video tape. Maximum length 60 seconds for classes 1 & 2. Commercial may address any aspect of the Grange or its programs. Be creative, use props and costumes or audio effects.

Section D	Open
Class 1	Radio
Class 2	Television
Class 3	Podcast or YouTube




[Return to Table of Contents](#)

MEMORIES COLLECTIONS

Premium Awards:
1st \$7.00 2nd \$5.00 3rd \$3.00

A collection is a group of 10 to 20 related items. Items may be related by type, characteristics, or theme. Exact duplications of items within a collection are not allowed. Display cases will **NOT** be provided. The exhibitor should provide accurate identification, if necessary, for the items included in the collection. Maximum size for display is 24" x 46". It is highly recommended that collections not displayed in a case be securely attached to a backing for transport and display.

Division 120	COLLECTIONS	
Section A	Junior	
Section B	Youth	
Section C	Senior	
Class 1	Grange Memorabilia	
Class 2	Any Other kind, specify	

SCRAPBOOKS

Sponsored by the California State Grange
Lecturer's Department

Premium Awards:
1st \$7.00 2nd \$5.00 3rd \$3.00

Division 125 **SCRAPBOOK**
Entries in this section are to be compiled into a scrapbook that is no more than 20" x 20" and 2" thick when closed. **Include title on the entry form.** Layouts for pages and books must have been completed within the last calendar year.

Section A	Junior
Section B	Youth
Section C	Senior
Class 1	Personal History Scrapbook/Baby
Class 2	Grange History Scrapbook
Class 3	Special Event Scrapbook



Division 127 **SCRAPBOOK PAGE**

Section A1	Junior, 6 & Under
Section A2	Junior, 7-8
Section A3	Junior 9-11
Section A4	Junior 12-14
Section B	Youth
Section C	Senior
Class 1	All About Me*
Class 2	Other Page

National Grange Junior Contest - Junior Grange contestants are encouraged to submit one scrapbook page about you. All Junior (Section A1, A2, A3, A4) entries in this contest will be submitted for judging at the National Grange Convention in November. Ages as of January 1. On the back of the artwork place a label with contestant's name, birth date, address, Grange name and number.

HOME ARTS DEPARTMENT

BAKING

Sponsored by the California State Grange
Women's Activities Committee

Premium Awards:
1st \$7.00 2nd \$5.00 3rd \$3.00

Division 150 **QUICK BREAD** - Non-yeast breads (one standard loaf - approximately 1 lb.)

Section A	Junior
Section B	Youth
Section C	Senior

Class 1	Fruit
Class 2	Vegetable
Class 3	Any Kind, machine
Class 4	Muffins (7)
Class 5	Any other kind - please specify
Class 6	Low Cal, Low Carb, or Special Diet



Division 151 **YEAST BREAD** (One standard loaf - approximately 1 lb.)

Section A	Junior
Section B	Youth
Section C	Senior

Class 1	Any Kind
Class 2	Any Kind, machine
Class 3	Rolls (7 individual)
Class 4	Low Cal, Low Carb, or Special Diet

Division 152 **COOKIE** (14 cookies) **Non-baked cookies are not eligible in this division**

Section A	Junior
Section B	Youth
Section C	Adult

Class 1	Brownies
Class 2	Chocolate Chip, drop
Class 3	Drop, any other kind
Class 4	Filled
Class 5	Fruit Bars
Class 6	Oatmeal
Class 7	Peanut Butter
Class 8	Refrigerator - Sliced
Class 9	Rolled
Class 10	Any Other Kind (specify)
Class 11	Low Cal, Low Carb or Special Diet



Commercial mixes or prepared cookie dough may not be used for exhibits. All exhibits should be made from scratch. Due to the perishable nature of the product exhibits are not returned. Prize winning exhibits will be auctioned to raise funds for awards

ALL Baking and Candy entries must be placed on a foam tray and enclosed in a zipper style resealable plastic bag. Entries not meeting these requirements will be disqualified. Submit a complete recipe printed on a 3" x 5" card, listing all ingredients with each exhibit.

[Return to Table of Contents](#)

CONFECTIONS

Premium Awards:

1st \$7.00 2nd \$5.00 3rd \$3.00

Entries in this category will not be returned due to the perishable nature of the product **Please note dehydration has been moved to a separate contest in Food Preservation**

Division 160 **CANDY** (10 Pieces)

Section A **Junior**
Section B **Youth**
Section C **Senior**



- | | |
|---------|------------------------------------|
| Class 1 | Brittle - any kind |
| Class 2 | Caramel |
| Class 3 | Divinity |
| Class 4 | Fudge – Any type |
| Class 5 | Fruit Leather |
| Class 6 | Hand Dipped - Any kind |
| Class 7 | Confection Any other Kind |
| Class 8 | Low Cal, Low Carb, or Special Diet |

Division 170 **SNACKS** (flavored popcorn, crackers, etc.) (Minimum amount pint size bag)

Section A **Junior**
Section B **Youth**
Section C **Senior**

- | | |
|---------|------------------------------------|
| Class 1 | Any Kind |
| Class 2 | Low Cal, Low Carb, or Special Diet |

Youth Members: Contact the California State Grange Youth Department for information about Youth Achievement Awards. Entry in the Exposition may meet requirements for these awards.

FOOD PRESERVATION

Premium Awards

Sponsored by the California State Grange
Women's Activities Committee

Premium Awards:

1st \$7.00 2nd \$5.00 3rd \$3.00

ENTRY RULES

- A) All entries must have been canned after September 1, 2009
- B) All jars must be STANDARD and SEALED. Use of paraffin or use of other than standard jars will disqualify exhibit. A STANDARD JAR is a container specifically designed for canning. Due to limitations on exhibit space, it is highly recommended that 1/2 and 1 pint jars be used. Larger jars may be used only where appropriate for the type of food, i.e. asparagus.
- C) Exhibits may be opened for judging. Opened jars will be returned. Exhibits are not refrigerated.
- D) **Each exhibit must be labeled with the following: date of processing, complete list of ingredients, Method of processing, and type of fill used (hot pack, cold pack).** Only one jar is needed for judging.
- E) The current edition of the Ball Blue Book and USDA guidelines will be considered the guides for all food preservation entries.

For more information: about the food preservation Awards visit the Jarden website at www.homecanning.com

Division 180

FRUIT

Section A **Junior**
Section B **Youth**
Section C **Senior**

- | | |
|---------|------------------------------------|
| Class 1 | Fruit |
| Class 2 | Mixed Fruits - specify |
| Class 3 | Sauce |
| Class 4 | Juice |
| Class 5 | Any Other Kind |
| Class 6 | Low Cal, Low Carb, or Special Diet |

Division 182

VEGETABLES

Section A **Junior**
Section B **Youth**
Section C **Senior**

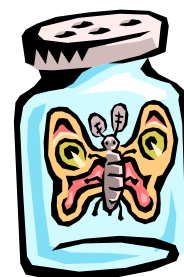
- | | |
|---------|------------------------------------|
| Class 1 | Beans |
| Class 2 | Mixed Vegetables |
| Class 3 | Tomatoes |
| Class 4 | Any Other Kind |
| Class 5 | Low Cal, Low Carb, or Special Diet |

Division 184

PICKLED FOODS

Section A **Junior**
Section B **Youth**
Section C **Senior**

- | | |
|---------|------------------------------------|
| Class 1 | Cucumber, Dill |
| Class 2 | Cucumber, Sweet |
| Class 3 | Fruit Pickles |
| Class 4 | Mixed Pickles |
| Class 5 | Olives |
| Class 6 | Relish |
| Class 7 | Vegetables, Pickled |
| Class 8 | Any other kind |
| Class 9 | Low Cal, Low Carb, or Special Diet |



[Return to Table of Contents](#)

Division 185

JAM

Section A **Junior**
Section B **Youth**
Section C **Senior**

- | | |
|---------|------------------------------------|
| Class 1 | Apricot/ Apricot Pineapple |
| Class 2 | Blackberry/Boysenberry |
| Class 3 | Strawberry |
| Class 4 | Mixed Fruit -2 or more |
| Class 5 | Plum |
| Class 6 | Any Other Kind |
| Class 7 | Low Cal, Low Carb, or Special Diet |

Division 186

JELLY

Section A **Junior**
Section B **Youth**
Section C **Senior**

- | | |
|---------|------------------------------------|
| Class 1 | Blackberry/Boysenberry |
| Class 2 | Grape |
| Class 3 | Strawberry |
| Class 4 | Fruit combo -2 or more |
| Class 5 | Any other kind |
| Class 6 | Low Cal, Low Carb, or Special Diet |

Hints From the Judges: Remove water spots by wiping jars with vinegar. Label after jars are cool, clean and dry, include all ingredients. Check the headspace for the type of food, method used, and processing time. Use new rings on all exhibits.

Division 187**OTHER SOFT SPREADS**

Section A Junior
Section B Youth
Section C Senior

Class 1 Marmalade
 Class 2 Fruit Butter
 Class 3 Conserve
 Class 4 Any Other, describe
 Class 5 Low Cal, Low Carb, or Special Diet

**Division 188 CANNED AND BOTTLED LIQUIDS**

Entries in this competition must be presented in sealed or firmly stoppered, glass containers.

Section A Junior
Section B Youth
Section C Senior

Class 1 Juice or beverage
 Class 2 Syrup or Topping
 Class 3 Vinegar
 Class 4 Any Other, describe
 Class 5 Low Cal, Low Carb, or Special Diet

Division 190 DRIED FOODS - 1 pint zip bags

Please note that a class for fruit leather is included in Confections in Division 160.

Section A Junior
Section B Youth
Section C Senior

Class 1 Fruit, Stone Fruits
 Class 2 Fruit, Tropical
 Class 3 Fruit, Any Other
 Class 4 Herb
 Class 5 Jerky, describe
 Class 6 Raisins
 Class 7 Tomato
 Class 8 Vegetable
 Class 9 Any other, describe
 Class 10 Low Cal, Low Carb, or Special Diet

Division 200 GIFT PACK

Exhibits in "Home Canning" must use at least 4 varieties of food SEALED in 1/2 pint or pint jars. Entries in "Any Other Food" will contain at least 4 separate items of food, i.e. vinegar, dehydrated foods, or baked goods presented in appropriate packaging with labeling. Entries in "For the Home" must have at least 4 separate home prepared gift items appropriate for use in the home, i.e. bath crystals, decorated towels, napkin rings and napkins (Matched sets will be counted as one item). Gift Packs will be judged on attractiveness and originality. Canned goods will not be opened for judging, nor foods tasted. 75% of gift pack must be homemade. Any commercial products included in gift pack may not exceed 25% or total contents.

Division 200 GIFT PACK

Section A Junior
Section B Youth
Section C Senior

Class 1 Home Canning
 Class 2 Any Other Food
 Class 3 For the Home
 Class 4 Any other kind

**TEXTILES****Premium Awards**

Sponsored by the California State Grange
 Women's Activities Committee

Premium Awards:

1st \$7.00 2nd \$5.00 3rd \$3.00

Exhibitor Note: Any brand of yarn or thread is welcome in these classes, including handspun yarn or thread. Please indicate on the entry form if handspun is used. All articles should be clean and properly blocked. The back of work must be visible for judging, including framed work, linings should be loose on 2 sides. Work may be presented on stretcher bars.

Division 210**NEEDLEARTS - Handwork**

Section A Junior
Section B Youth
Section C Senior

Cotton Thread - Hand Crochet, Knit or Tat

Class 1 Bedspread or Tablecloth
 Class 2 Doily or table topper
 Class 3 Clothing item
 Class 4 Any Other, specify

Yarn - Hand Crochet, Knit or Tat

Class 5 Afghan
 Class 6 Baby Blanket
 Class 7 Baby Set
 Class 8 Cap, Hat or Scarf
 Class 9 Sweater, adult or child
 Class 10 Any other, specify

Needlework - Any Other Thread or Yarn

Class 11 Tablecloths or Luncheon Cloths
 Class 12 Embroidery or Crewelwork
 Class 13 Counted Cross Stitch (any item)
 Class 14 Needlepoint/plastic canvas
 Class 15 Latch Hook (any item)
 Class 16 Any Other, Made from a kit
 Class 17 Any Other, specify

**Division 220****QUILTS AND COMFORTERS**

Sponsored by Rosedale Grange

Premium Awards:

1st \$10.00 2nd \$7.00 3rd \$5.00

Section A Junior
Section B Youth
Section C Senior

Class 1 Baby Quilt, crib size
 Class 2 Comforter, tied
 Class 3 Quilt, hand quilted
 Class 4 Quilt, machine quilted by exhibitor
 Class 5 Quilt, made by a group
 Class 6 Wall hanging or throw, hand quilted
 Class 7 Any item using a kit
 Class 8 Any other quilted item



Exhibitor Note: Quilting is generally accepted as either hand or machine stitching which joins a top layer to a backing, with a layer of batting in between. Hand quilters work for consistent spacing and number (10 or more) of stitches, both on the front and back. Backings should not be puckered. Avoid large stitches and knots should be hidden.

[Return to Table of Contents](#)

1st \$7.00 Premium Awards:
2nd \$5.00 3rd \$3.00

Division 230 WEAVING, MISCELLANEOUS OR MIXED TECHNIQUES

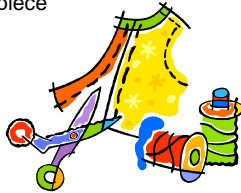
Section A Junior
Section B Youth
Section C Senior

- | | |
|---------|--------------------------------|
| Class 1 | Weaving |
| Class 2 | Machine Embroidery |
| Class 3 | Machine Knit |
| Class 4 | Macramé |
| Class 5 | Spinning - minimum 1 oz. skein |
| Class 6 | Any Other Kind, specify |

Division 240 SEWING - Clothing Construction

Section A Junior
Section B Youth
Section C Senior

- | | |
|----------|-------------------------------|
| Class 1 | Blouse or shirt, adult |
| Class 2 | Blouse or shirt, child's |
| Class 3 | Coordinated outfit, 2-3 piece |
| Class 4 | Dress, child's |
| Class 5 | Dress, ladies |
| Class 6 | Jacket or Coat |
| Class 7 | Jumper or Overalls |
| Class 8 | Pants or shorts |
| Class 9 | Skirt |
| Class 10 | Tailored Garment |
| Class 11 | Vest |
| Class 12 | Any other garment, describe |



Division 250 SEWING - Household creations

Section A Junior
Section B Youth
Section C Senior

- | | |
|---------|-------------------------|
| Class 1 | Apron |
| Class 2 | Fashion Accessory |
| Class 3 | Hand Bag or Tote Bag |
| Class 4 | Potholder (pair) |
| Class 5 | Any other item, specify |

Division 260 STUFFED TOYS

No commercial doll parts accepted; must be handmade. Dolls must be dressed in custom made clothing. Maximum size 24"x24"x24"

Section A Junior
Section B Youth
Section C Senior

- | | |
|---------|----------------|
| Class 1 | Animal |
| Class 2 | Doll |
| Class 3 | Any other kind |



Exhibitor Note: Toys made to be given to small children should be carefully constructed so that there are no small pieces that could become a choking hazard. All trims should be securely attached, buttons and snaps should not be used, instead plan to use loop and hook type fastener like Velcro for closures. Crochet and knit toys should be lined so that the stuffing cannot be pulled out. Eyes should be painted, embroidered or should be safety eyes. Avoid sharp edges and protrusions that could injure a child. If using paste or glue, be sure that is non-toxic and safe for children. Stuffing should be clean and new, preferably a fiberfill or pellet type for easy care.

Granges are encouraged to make toys to give to your local children's homes, hospitals, special education schools, and fire and police departments for the use of children. Make sure to attach a tag that "This toy was made for you with love by "Your Grange"."

Division 270 WEARABLE ART

Decoration may be on any handmade or purchased article. Judged strictly on beauty and originality.



Section A Junior
Section B Youth
Section C Senior

- | | |
|---------|--------------------------------|
| Class 1 | Appliqué, Patchwork, or Pieced |
| Class 2 | Beaded |
| Class 3 | Dyed |
| Class 4 | Embroidered |
| Class 5 | Painted, Stenciled |
| Class 6 | Quilted |
| Class 7 | Any other, specify |

Just for Fun! Aprons, let's make holiday aprons or for any other special event) for State Convention and have an apron fashion show at our GWA breakfast. They can be made fancy or crazy. You name it. Just have fun and be creative. There will be no award as this is not a contest and no entry form is needed, just a fun way of showing the talent of our GWA.

HORTICULTURE

The National Junior Horticultural Association, in recognition of the contributions of William Saunders, presents the NJHA/Grange William Saunders Memorial Award. Any Grange youth (ages 5-22) who is a Grand National winner in NJHA competition is eligible for consideration; the NJHA convention contest committees selections of the winners.

There is no charge for membership and participation in NJHA. Individuals and groups may enter; leaders can receive a project book listing all projects. Contests include leadership recognition, photography, gardening, plant propagation, environmental awareness, and more. Contest deadlines vary.

For contest rules and information write to Mrs. Carole S. Carney, NJHA Executive Secretary, 15 Railroad Ave., Homer City, PA 15748 (724) 479-3254. Information about NJHA can also be found at their website: www.njha.org/welcome.html

Exhibitors Note: Please see [Floriculture](#) and [Natural Science](#) Departments for additional related classes.

LIVESTOCK

No competitions are held for live animals during the California State Grange Exposition in October. Members raising animal projects are encouraged to submit [Grange Youth Fair Project Record](#) books in Division 100 of the Grange Members in Action Department. We also encourage you to enter the results of projects related to your animal projects. For example if you have a Dairy Goat project you might submit a Gift Basket of different soaps made from Goat milk in the Gift Basket competition found in Home Arts Div. 180. A Swine project member could present an album documenting the construction of a farrowing crate in Ag Mechanics Div. Department. Remember these are just examples.

MISCELLANEOUS

Premium Awards
1st \$7.00 2nd \$5.00 3rd \$3.00

Division 300 MISCELLANEOUS PROJECTS
Section A Junior
Section B Youth
Section C Senior

- | | |
|---------|----------------------------|
| Class 1 | Lapidary |
| Class 2 | Metal craft - Jewelry |
| Class 3 | Soap - handmade |
| Class 4 | Candles - any type |
| Class 5 | Decorated Cake |
| Class 6 | Lego Construction |
| Class 7 | Any other - please specify |



NATURAL SCIENCES DEPARTMENT AGRICULTURE

Sponsored by the California State Grange

Premium Awards
1st \$7.00 2nd \$5.00 3rd \$3.00

Exhibits should be full mature or ripe and properly cleaned. Bulk entries must be shown in a clear 1-pint container, unsealed. Bundles and sheaves should be mature and cured, not less than 2" in diameter at the bottom tie. Entries must have been grown and prepared by the exhibitor. Entries should be grown for normal home use. Monstrosities (extremely oversize, or unnaturally grown) will not be considered for awards. **All entries must be identified by species and variety on the entry form, please note organic produce.**

Division 310 FIELD CROPS & GARDEN SEED
Section A Junior
Section B Youth
Section C Senior

- | | |
|---------|------------------------|
| Class 1 | Bulk, any variety |
| Class 2 | Corn, dried, 5 ears |
| Class 3 | Grain, Bulk |
| Class 4 | Grain, Sheaves |
| Class 5 | Sunflower head |
| Class 6 | Dried Flowers, bundles |
| Class 7 | Any Other |



Division 312 VEGETABLES - plate display
Section A Junior
Section B Youth
Section C Senior

- | | |
|----------|----------------------|
| Class 1 | Beans (12 pods) |
| Class 2 | Peppers (5 pods) |
| Class 3 | Tomatoes (5) |
| Class 4 | Sugar Beets (3) |
| Class 5 | Carrots (Bunch of 5) |
| Class 6 | Garlic (5) |
| Class 7 | Potatoes (5) |
| Class 8 | Pumpkin (1) |
| Class 9 | Squash, summer (3) |
| Class 10 | Squash, winter (1) |
| Class 11 | Any other, identify |



Division 314 FRUIT - plate display

Section A Junior
Section B Youth
Section C Senior

- | | |
|---------|--------------------------|
| Class 1 | Apples (5) |
| Class 2 | Citrus (5) |
| Class 3 | Pears (5) |
| Class 4 | Any other tree fruit (5) |
| Class 5 | Grapes (3 bunches) |
| Class 6 | Any other fruit (5) |



Division 316 NUTS - plate display 1 lb. unshelled
Section A Junior
Section B Youth
Section C Senior

- | | |
|---------|-------------------|
| Class 1 | Almonds |
| Class 2 | Walnuts |
| Class 3 | Any other variety |

Division 318 HONEY - 1 lb. jar
Section A Junior
Section B Youth
Section C Senior

- | | |
|---------|--------------------------------|
| Class 1 | Honey, extracted |
| Class 2 | Honey, comb |
| Class 3 | Honey, creamed or crystallized |

AGRICULTURAL FIBERS

Premium Awards
1st \$7.00 2nd \$5.00 3rd \$3.00

This Division is designed to display natural fibers that have not been spun. Fleece may be rolled or tied. Display method is left to the individual exhibitor, but must be sufficient for judging of fiber quality, strength and length. For [hand spun fiber yarns](#) and weaving please see textile classes.

Division 330 AGRICULTURAL FIBERS

Section A Junior
Section B Youth
Section C Senior

- | | |
|---------|----------------|
| Class 1 | Cotton Lint |
| Class 2 | Wool Fleece |
| Class 3 | Any Other Kind |



SPECIAL THANKS TO OUR DONORS AND SPONSORS

- Bellevue Grange
- Danville Grange
- Ione Grange
- Marshall Grange
- Rainbow Valley Junior Grange
- Rosedale Grange
- San Diego County Pomona Grange
- California State Grange Women's Activities Committee
- California State Grange Junior Committee
- California State Grange Lecturer's Department
- California State Grange Family Health Resources Committee
- California State Grange Youth Department
- California State Grange Youth Fair Program
- California Grange Youth Activities Department
- Yvette Adams
- Sue Taylor
- Dave Wilson
- In Memoriam Donations for Marge Couch

PERFORMING ARTS DEPARTMENT

TALENT CONTEST

Sponsored by the California State Grange
Community Service Department in cooperation
with the Lecturer's Department

AWARDS

\$2000 in cash awards to be split among the contestants
Best of Show - Trophy

Division 340 TALENT CONTEST Section D OPEN

Class 1 15 years of Age and under
Class 2 Age 16 +

*Qualify for this Competition through
your local community Grange. Winners
from Community Grange contests will
be invited to compete at the Convention.*

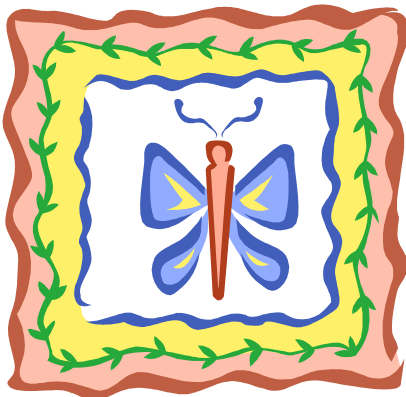


*All performers at State level must be Grange or Junior
Grange members. Performers in a group need not be
members of the same Grange. Taped accompaniment for vocal
acts must be instrumental only. No taped accompaniment for
instrumental acts. Maximum time limit: Six Minutes, no minimum
time. To participate at the State Convention you must be
selected at community Grange level. **NO CONTESTANT MAY
COMPETE IN MORE THAN ONE COMMUNITY GRANGE
CONTEST.***

*The California Best of Show winner is eligible to represent the
state at the National Grange Convention in November.*

LECTURER'S EVENING OF VARIETY

This is a non-competitive variety show to be held at the state
convention. Performers who are in it for the fun are strongly
encouraged to register with State Lecturer, Buzz Chernoff by
September 15, 2010 at lecturer@californiagrang.org. This
show will be scripted in advance so to assure your participation
register now. Walk-on performance will be accommodated as
time permits. Act now to receive your 5 minutes of FAME!!!!



JUNIOR GRANGE TWO-MINUTE SPEECH CONTEST

Sponsored by the California State Grange Junior
Grange Department

**Entry Deadline: Registration at the Youth & Young Adults
Conference**

This contest is open to Junior Grange Members Only. The
California State Grange judging will be held at the Annual Youth
Conference. Judges may offer constructive points for
improvement. The contestant's age as of January 1, 2010 will
determine the age group. Time Limit: 2 minutes – minimum 1
minute. First place winners in Class 2, 3 and 4 may present their
speech at the Western Regional Youth Conference.

Division 350 2-MINUTE SPEECH – Topic of Your Choice

Section A Junior

Class 1 7 years & under
Class 2 8-10 years of age
Class 3 11 – 12 years of age
Class 4 12-14 years of age

PUBLIC SPEAKING

Sponsored by the California State Youth
Department

**Entry Deadline: Registration at the Youth & Young Adults
Conference**

This contest is open to Members Only. The California State
Grange **judging is held at the Annual Youth Conference.** The
contestant's age at the time of the State Judging will determine
which Section to enter.

Division 360 GRANGE PUBLIC SPEAKING CONTEST

Section B Youth 13-19 years of age

Section C1 Adult 20-29 years of age

Section C2 Adult 30+ years of age

Class 1 Speech
Class 2 Elevator Speech
Class 3 Impromptu



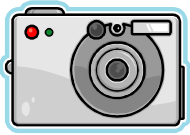
Class 1: Contestants will be required to answer an impromptu
question related to the topic of the speech at the end of their
speech. Topic: Contestant's Choice. **Time Limit minimum 4
minutes – maximum 7 Minutes.**

Class 2: You've met someone in an elevator or been stopped in
a restaurant and are asked, "What is the Grange?" Your task is to
explain what the Grange is in one and one-half minutes (90
seconds). Response should be thought out and delivered without
hesitation.

Class 3: Topics will be drawn by the contestants, no preparation
time will be given. Time limit: Maximum 7 minutes.

JUNIOR GRANGE MEMBERS: You can earn Merit Badges for
participating in the Grange Exposition. See your Leader for more
information or contact CSG Junior Director for details.

[Return to Table of Contents](#)



PHOTOGRAPHY DEPARTMENT

Sponsored by the California State Grange Lecturer's Department

Premium Awards:

1st \$7.00 2nd \$5.00 3rd \$3.00

Photographs may be entered in only one class; the exhibitor must select the class for the entry. Photos must be mounted for display in frames, mats or with a backing. Hanging devices must be firmly attached to the back of the entry (3 one inch pieces of hook sided, Hook and loop (Velcro) attached to the back of matted or backed photographs is suitable). Glass covered entries will not be accepted for judging. Size of entry including frame or backing must not be smaller than 5"x5" or larger than 16"x20". Only photos taken after 9/1/2009 are eligible for entry. Exhibits with digital captions must be entered in Computer Manipulated. Compositions must be composed of original photos taken by the exhibitor. Analog, digital and cell phone photographs will be accepted for this contest.

Division 370

Section A1

Section A2

Section B

Section C

Class 1	Agriculture
Class 2	Americana
Class 3	Animals and Other Creatures
Class 4	Architecture
Class 5	Grange, Imagine the Possibilities
Class 6	Holiday Happenings
Class 7	Landscape
Class 8	Plant Life
Class 9	Portrait
Class 10	Seascape/waterscape (water emphasis)
Class 11	Trees
Class 12	Computer Manipulated Photographs

PHOTOGRAPHY

Junior, 9 & Under

Junior, 10 to 13 inclusive

Youth

Senior

Division 375

Photo Story

A set of four to six individual pictures telling a story, all mounted together as one piece. For example: a set of photographs showing the blossoming of a flower or the construction of house.

Section A1

Junior, 9 & Under

Section A2

Junior, 10 to 13 inclusive

Section B

Youth

Section C

Senior

Class 1

Photo Story



TECHNOLOGY DEPARTMENT

AG MECHANICS & INDUSTRIAL TECHNOLOGY

Sponsored by the California State Grange Youth

Fair Committee

Premium Awards

1st \$7.00 2nd \$5.00 3rd \$3.00

Class 1: Document the construction of single large projects (i.e.: farrowing crate, trailer, bar-b-que, hope chest, lamp, etc.). Include: plans; construction materials list; costs; provide at least 12 photographs of the project under construction; include detail photos (welds, joints, miters, etc.). If judged at a local fair include a copy of judging evaluation and comment form. Due to limitations of the display area completed projects cannot be accepted or displayed.

Class 2: Smaller projects that can be displayed. Battery operated projects must include a full set of fully charged batteries. Electrical projects must have a method to stop the flow of current. Entries must be age appropriate. Include an explanation of how the project works and is used.

Division 390 TECHNOLOGY

AG MECHANICS AND INDUSTRIAL

Section A

Junior

Section B

Youth

Section C

Senior

Class 1

Large project album or display board

Class 2

Small project, 18" x 18" x 18" maximum

[Return to Table of Contents](#)



COMPUTER APPLICATIONS COMPUTER DESIGN

Sponsored by the California State Grange
Lecturer's Department

Premium Awards

1st \$7.00 2nd \$5.00 3rd \$3.00

Entries should be mounted or framed (no glass) for exhibition. Entries must be printed on 8 1/2" x 11" paper and may be printed in either portrait or landscape mode, may include a sample of final product. Entry must be computer generated and designed by the exhibitor.

Division 400

Section A
Section B
Section C

Class 1
Class 2
Class 3
Class 4
Class 5
Class 6

COMPUTER DESIGN

Junior
Youth
Senior

Artwork - any type
Grange flyer or brochure
Grange Newsletter
Grange Poster
Letterhead for a Grange or officer
Any other graphic design or set of plans



COMPUTING - PowerPoint Presentation

Sponsored by the California State Grange Youth
Department

Premium Awards

1st \$7.00 2nd \$5.00 3rd \$3.00

Create a successful presentation that is appealing to an audience. Must include the following: Slides for visual effects (at least one 35 mm slide, black & white or color transparency or images displayed on a computer screen); Outline, including slide titles and text of bulleted items, must cover all key points; Notes, thumbnail or reduced size copies of visuals; Handouts, at least one handout must be included in your presentation. Submit in a 3-Ring binder. Use sheet protectors for your slides etc. Include disk copy of presentation. Exhibitor identification information on the first page in the binder. **No age groupings.**

Division 410

Section D

Class 1
Class 2

POWERPOINT PRESENTATION

Open

Grange Presentation
Any other presentation



COMPUTING - WEB PAGE DESIGN

Division 420 **WEB PAGE DESIGN**

Design a successful website. Web pages should be designed for easy access from most computer platforms and browsers. Website needs to include information about the Grange and activities. Content must be appropriate for all ages. **THE WEBSITE ADDRESS MUST BE INCLUDED ON THE ENTRY FORM.** Websites will be visited by judging panel between September 20th and October 4th. Addresses will not be made public. **Amateur Exhibitors Only, exhibitor must be the individual who has built the website.**

Section A
Section B
Section C
Class 1

Junior
Youth
Senior
Web Page



HINTS: Sites should be easy to navigate with a design (backgrounds and themes) that is consistent throughout the site. You should be able to tell you are on the same website. **BIG TIP:** There should be no broken links **BIG TIP#2: PROOFREAD...** Pages full of spelling errors may convince your visitors to look elsewhere for information.

WOODWORKING

Best of Show Senior Woodworking - \$15.00

Individual Class Awards - Senior Woodworking

Sponsored by Dave Wilson

Premium Awards:

1st \$7.00 2nd \$5.00 3rd \$3.00

Entries in these class are limited in size to a maximum of 24" x 24" x 24". Exhibits in Classes 1 and 2 may be constructed from kits, or may be cut out by another person.

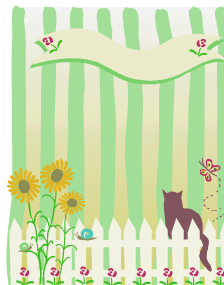
Division 430

Section A1
Section A2
Section B
Section C

Woodworking

Junior, 9 and under
Junior, 10 to 13 inclusive
Youth
Senior

Class 1 Pre-cut, painted
Class 2 Pre-cut, stained or finished
Class 3 Self-cut, painted
Class 4 Self-cut, stained or finished
Class 5 Machine carved, painted
Class 6 Machine carved, stained or finished
Class 7 Hand carved/whittled, painted
Class 8 Hand carved/whittled, stain or finish
Class 9 Machine Turned (lathe), painted
Class 10 Machine Turned, stain or finished



[Return to Table of Contents](#)

JUDGING SCORECARDS & CRITERIA

Criteria for judging art entries:

- How well the artist used the medium selected
- Craftsmanship and skill
- Composition, presentation of subject
- Originality
- Theme and its treatment

Criteria for judging coloring contest entries:

- general appearance
- neatness
- harmony of color

Criteria for judging handicrafts:

- Workmanship
- General appearance
- Selection of design
- Harmony of Color
- Suitability of article to purpose

Scorecard for judging Creative Writing

Originality	25 points
Clarity of thought	20 points
Organization	25 points
Effective Use of Language	20 points
Neatness	10 points
TOTAL POINTS	100

Scorecard for Manually Sign the Alphabet & Junior Sign-A-Song Contests

Utilization of total communication (sign language ability, signs clearly with creative interpretation)	35 points
Body expressions, displays emotion	30 points
Presentation, interpretation with confidence	35 points
TOTAL POINTS	100

Scorecard for Sign-A-Song Contest

Utilizes total communication skills; Sign Language ability; signs clearly with correct interpretation.	30 points
Body expression, displays emotion, expresses key thoughts with body movement; mouth words for lip reading.	30 points
Presentation, Interpret with confidence, uniformity (group)	20 points
Song selection is appropriate, with a clear meaning and is suitable for the contestants signing ability.	20 points
TOTAL POINTS	100
10-point deduction for each minute or fraction over the time limit	

Criteria for judging Arrangements:

Design	25%
Interpretation/Suitability	20%
Color	15%
Relationship	15%
Distinction/Originality	15%
Condition	10%

Criteria for judging Potted Plants:

Color	20%
Size	10%
Stem	20%
Substance	10%
Foliage	15%
Distinction	10%
Form	15%

Scorecard for judging Feature Display:

Educational Value	40%
Quality	25%
Creative use of space	15%
Theme	20%

Scorecard for judging GYF Project Record Books:

Record books should document the project(s) that have been undertaken by GYF participants.		
1st Group Superior	92%-100%	Blue Ribbon
2nd Group Good	84%-91%	Red Ribbon
3rd Group Average	70%-83%	White Ribbon
4th Group Poor	69% or less	Participant

Scorecard for Breads, Muffins

Flavor	30%
Taste and aroma, sweet, nutty blended.	
Texture	25%
No streaks or close grain, size and uniformity of cell walls, elasticity.	
General Appearance	15%
Shape - proper dome, smoothness, crust color.	
Lightness	15%
Crust	15%
Thickness, quality, crispness, tenderness and uniformity	

Scorecard for Cookies

Appearance	40%
Uniformity - 20%	
Color - 20%	
Crumb (texture)	30%
Flavor	30%

Scorecard for Candy

Texture	30%
Crystalline - velvety, creamy	
Non-Crystalline - smooth	
Flavor	30%
Consistency	25%
Crystalline - firm, not hard or soft.	
Non-Crystalline - holds shape, no crystals.	
Appearance	15%
Color, size, shape of pieces	

Scorecard for Canned Fruits & Vegetables

Product (Absence of defects, high quality food products, color as nearly that of standard cooked product as possible, consistency, tender, flavor)	65%
Pack (fullness, proper headspace, neatness and uniformity)	25%
Container (sealed containers of specified size, clean,	10%

Scorecard for Fruit Sauces

Flavor	30%
Consistency	25%
Body of the sauce definite, thin, very thick.	
Smoothness to the palate	25%
Appearance	20%

[Return to Table of Contents](#)

Scorecard for Pickles, Relishes and Any Other

Product	65%
Pack	25%
Container	10%

Scorecard for Soft Spreads

Texture	35%
Jelly - tender, should quiver, cut easily and retain shape, no crystals.	
Jams - crushed fruit. No separation of fruit and juice.	
Flavor	35%
Appearance	30%
Color - 15%	
Clearness - 10%	
Container - 5%	

Criteria for judging dried or dehydrated products:

- Condition of exhibit (free from insects, blemishes, disease)
- Quality of product
- Form (typical of variety)
- Neatness of packaging

Criteria for judging gift baskets:

- Workmanship & general appearance
- Selection of design
- Harmony of Color
- Suitability of items to purpose

Criteria for judging needlework, quilting and other works:

- Workmanship
- General appearance
- Selection of design
- Harmony of Color
- Suitability of article to purpose

Criteria for judging sewing:

- Construction
- Workmanship
- General Appearance
- Suitability of material for type of garment or item

Criteria for judging stuffed toys:

- Workmanship
- General Appearance
- Selection of design
- Suitability of fabric and materials for design

Criteria for judging wearable art:

- Workmanship
- General appearance
- Selection of design
- Harmony of Color
- Suitability of garment to purpose

Criteria for judging fleece and fiber

- Character including crimp and color
- Length and strength of staple
- Evenness of quality
- Condition – clean, free of debris

Scorecard for Talent Contest

Audience Appeal	25 points
Entertainment Value	25 points
Stage Presence	25 points
Skill of Presentation	25 points
TOTAL POINTS	100

Additional Bonus Points

Humor in introduction or performance	10 points
Informational/Educational content	10 points
Clever reference to community or community Grange	5 points

Scorecard for judging Speech Contest

Text (content -information gathered and included in speech)	15 points
Composition (compiled in a manner that is easy to understand)	15 points

Delivery

Voice	10 points
Stage Presence (dress, posture, nervousness)	20 points
Expression (delivered speech with enthusiasm & emotion)	20 points
Impromptu Answer: Response was thought out and delivered without much hesitation	20 points

TOTAL POINTS 100**Scorecard for judging 2-Minute Speech Contest**

Eye Contact	20 points
Time	10 points
Content	20 points
Preparation	30 points
Volume	10 points
Body Language	10 points

TOTAL POINTS 100**Criteria for judging photography:**

- Composition and arrangement
- Interest
- Presentation
- Technique

Criteria for judging Ag Mech./Industrial Tech:

- Organization of album
- Completeness (are all steps displayed or explained)
- Use of captions and explanations
- Neatness

Criteria for judging Computer Design

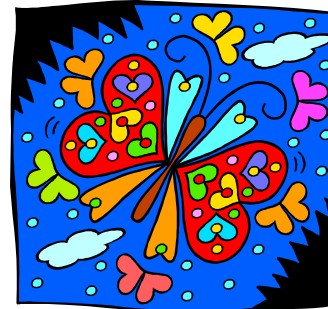
- Craftsmanship and skill
- Composition, presentation of subject
- Originality
- Suitability for intended use

Criteria for judging Electricity

- Suitability of materials
- Workmanship
- Age appropriate project
- Construction

Criteria for judging Woodworking

- Suitability of materials
- Workmanship
- Age appropriate project
- Construction
- Paint or finishing

[Return to Table of Contents](#)

Application for Fraternal Grange Membership

To the officers and members: I, _____

Mailing Address: _____

City: _____

Phone(_____) _____ Birth Date _____

Occupation: _____

(If retired, please state previous occupation)

For Subordinate Secretary

Grange: _____

No: _____ Affiliate? Yes

Home Grange _____

Home Grange No. _____

Grange News Yes No

Date Joined: _____

Fee Paid: \$ _____

Dues Paid \$ _____

For State Secretary

Member No. _____

respectfully petition to be initiated and enrolled as a member of your Grange.

In presenting this application, I am influenced by no motive other than to desire to unite with others in elevating and advancing the interest of Husbandry and Rural Life and receiving in return such benefits and advantages as may accrue to all who belong to the Grange. I promise a faithful compliance with the By-Laws of this Grange, and the Constitution and Laws of the State and National Grange. I have not previously applied for membership in this or any other Grange within the past 6 months.

Signature of Applicant: _____ Date: _____

Recommended by: 1. _____ and 2. _____

Application Fee: \$ _____ Annual Membership Dues \$ _____

Membership applications should be submitted to your local Grange in addition to the appropriate dues. If you have a question regarding the location of the closest Grange in your area, please feel free to contact the California State Grange Office at (916) 454-5805.

JUNIOR GRANGE MEMBERSHIP APPLICATION

I, (name) _____

Mailing Address _____

City _____ State _____ Zip _____

Phone (_____) _____ Date of Birth _____ Age _____

Go ~~ckl~~"aa

ask to be initiated and enrolled as a member of: _____ Junior Grange No. _____

Enclosed is my membership fee of \$ _____ Date: _____

Signature of Parent or Guardian _____

ENTRY INSTRUCTIONS

The 2010 Grange Exposition Entry Form will only be accepted for entries, please feel free to copy this form.

Completely fill out the top of the entry form. Clearly print all information. Birthdate and age information is only required for Junior and Youth exhibitors. Make sure to sign your entry. Grange name and number and region name or number must be filled in. Guest Exhibitor entries must be signed by a sponsoring Grange member and will be counted toward the Sweepstakes award count for that Grange. Past exhibitors may include their exhibitor number from prior years. Entry confirmation will be provided by email address or self addressed stamped envelope.

List all items entered (regardless of receiving dates and department). Entries for contests with deadlines prior to August 29th will be counted in the Sweepstakes Award calculations. Please make sure to keep a copy of your entry form(s).

For each exhibit make sure to list the correct Division number, Section (Age Group) and Class number. Item description can include titles for artwork and photography; variety or type for food entries (i.e. Kiwi Jam, Butter Cookies), or description of the actual entry (i.e.: Blue silk pantsuit, seed mosaic of new Grange Emblem). Please be sure to indicate any special awards that the entry may be qualified for in the appropriate column on the form.

If another person is transporting your exhibits to the Grange Exposition, be sure that each exhibit is well marked with your name, as well as Division, category and class entered. Bring a copy of the Entry Form for check in. Entry tags will be distributed at check in. This will aid everyone in the check-in process. Please review page 5 for other hints.

GRANGE REGIONS

Region 1

Lassen, Modoc, Shasta, Siskiyou and Trinity Counties

Region 2

Butte, Colusa, Glenn, Lake, Sutter, Tehama, Yolo, and Yuba Counties

Region 3

Del Norte, Humboldt, and Mendocino Counties

Region 4

Contra Costa, Marin, Napa, Solano and Sonoma Counties

Region 5

Monterey, San Benito, San Mateo, Santa Clara and Santa Cruz Counties

Region 6

Alpine, Amador, El Dorado, Nevada, Placer, Plumas, Sacramento and Sierra Counties

Region 7

Calaveras, Mariposa, Merced, Mono, San Joaquin, Stanislaus, and Tuolumne Counties

Region 8

Inyo, Los Angeles, and San Bernardino Counties

Region 9

Fresno, Kern, Kings, Madera and Tulare Counties

Region 10

San Luis Obispo, Santa Barbara and Ventura Counties

Region 11

Imperial, Orange, Riverside and San Diego Counties.

MAILING ADDRESSES FOR ENTRIES

All Entry Forms

Due By: September 15, 2010

Grange Exposition Registrar

Hi HEAVUd^^c
U&:æ ^} q EOCZA í ì Fí

Horizon Leadership Program

Youth Activities Director

Hi HEAVUd^^c
U&:æ ^} q EOCZA í ì Fí

Entries Close: September 15, 2010
Exhibit Receiving:

Oct. 13th 8:00 AM – 6:00 PM October

California State Grange Convention –CA
Entry Release: Oct. 17, 2010 8:00 AM - Noon

Please note: Receiving begins prior to the opening of the California State Grange Convention

CALIFORNIA STATE GRANGE EXPOSITION 2010

ENTRY FORM

Entries Due September 15, 2010

Page _____ of _____
for multiple page entries

Please Print

EXHIBITOR NAME: _____ **MEMBER** GRANGE _____
 MAILING ADDRESS* _____ **GUEST EXHIBITOR** GRANGE NUMBER _____
 CITY _____ ZIP _____ BIRTHDATE** _____ REGION NUMBER _____
 PHONE _____ AGE 1/1/2009 _____ EXHIBITOR # _____
 FAX _____ *Returning exhibitors use the
same number each year.*
 EMAIL ADDRESS: _____ @ _____

*Personal mail address is required for each exhibitor. Group or Grange addresses will not be accepted

Entrant Signature (required) _____
Grange Youth Fair Advisor/JG Leader/or Parent Signature**
**Required for Junior & Youth Exhibitors

Sponsoring member Signature for Guest Exhibitor

Information provided on this form is used only by the California State Grange and is not sold or transferred to any other organization.

ITEM DESCRIPTION / CAPTION	DIVISION	SECTION	CLASS	FOR STAFF USE ONLY		
				RECEIVED	AWARD	RELEASED
1						
2						
3						
4						
5						
6						
7						
8						
9						
10						
11						
12						
13						
14						
15						
16						
17						
18						
19						
20						

Send Entries to:
California Grange Exposition
Katie Squire, Director
 1000 California Street
 Ukiah, CA 95568

Some exhibitors have expressed an interest in donating their premium awards back to the California State Grange Exposition. We would like to know if this is your intent ahead of time. If you would like to donate your premium awards or a set amount of the awards, please check the appropriate box and initial it. Following convention a receipt for the

DONATE ALL _____
 DONATE SET AMOUNT _____ Up to \$ _____